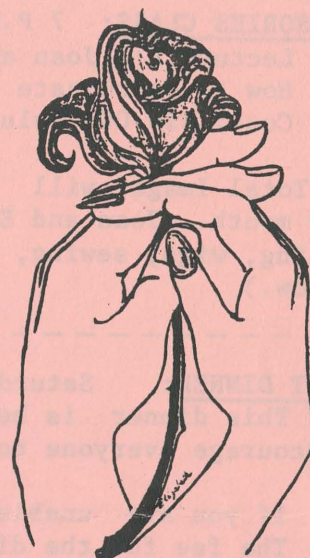


TIFFANY CLUB SPECIAL ANNOUNCEMENTS
AND COMING EVENTS, JANUARY/FEBRUARY 1984

Tiffany Club, Box 19, Wayland MA 01778
(617) 358-5575



CALANDER:

January 28: Outreach's Relationships Workshop
February 18: Tiffany's Valentines Party and Raffle
February 25: Tiffany Club Business Meeting
February 29: Accessories Class
March 10: Outreach's Hasty Pudding Benefit
March 10: Tiffany's Buffet Supper Party
March 17: St. Patrick's Party
March 28: Make-up Class
April 7: Transsexual Meeting
April 14/15: Spring Clean-up
April 21: 5th Annual Spring Open House
April 25: Compartment Class
May 30 -
June 4: 4th Annual P-town Outing

RAFFLE: This is Tiffany's 4th annual 'Oil & Electric Bill, Help Us Keep The Wolves From The Door' raffle.

This winter has been particularly unkind, so please, buy a lot of tickets.

Tickets: \$5.00 each, five for \$20.00, fifteen for \$50.00

Prizes: TWO FREE TRIPS TO OUR P-TOWN OUTING (transportation not included), and a selection of prizes from our commercial supporters and friends.

Procedure: You do not have to be present at the party to win. Send us your ticket purchase, and we will send you your ticket stubs with your name and number. Tickets will be drawn at Tiffany's Valentine's Party on 2/18. If you are not able to be present at the drawing, and you win, you will be notified.

(Contributions wanted! The contributions can be anything. The more good prizes we have, the more raffle tickets we can sell. The more prizes we have the more fun we have at the party.)

TIFFANY'S 5TH ANNUAL VALENTINE'S PARTY: 7 P.M., Saturday, February 18, 1984

This is traditionally the first party of the year, and it is always great fun. BE THERE!

FEES: \$10.00 for Tiffany General and Key members, females, general and key members of Mayflower and Harriet Lane's and TAMS, and approved guests.

\$15.00 for Tiffany Special members, and members in good standing of approved organizations.

\$20.00 for those not listed above.

CONTINUED

BUSINESS MEETING: 8 P.M., Saturday, February 25, 1984

All Tiffany Club General members and Keyholders are encouraged to attend.

ACCESSORIES CLASS: 7 P.M., Wednesday, February 29, 1984

Lecturers: Joan and Elinor of 'Total Image'.

How to coordinate your outfit: Jewelry, scarves, belts, etc.

Cost: \$10.00 (plus the appropriate attendance fee)

(**'Total Image' will be conducting educational classes the last Wednesday evening of every month. Joan and Elinor are versatile and highly skilled professionals [cosmotology, modeling, wigs, sewing, etc.]. If you have any suggestions for future classes, please let us know.)

BUFFET DINNER: Saturday evening, March 10, 1984

This dinner is being coordinated with Outreach's Hasty Pudding Benefit (see flier). We encourage everyone to support Outreach by attending.

If you are unable to attend the Benefit, but would like to attend the dinner, you may. The fee for the dinner alone is \$15.00.

ACCOMMODATIONS: Since the benefit does not include accommodations, the Tiffany Club has agreed to help coordinate accommodations. Tiffany will serve as a 'base of operations', a 'headquarters'. People will stay in local hotels, then come to Tiffany, then leave from Tiffany for the Benefit, then return to Tiffany for the buffet.

Recommended places to stay are at Tiffany (a place to 'crash'), the Red Roof Inn (Framingham MA), and the Holiday Inn (Waltham MA).

Questions: Call Merissa Sherrill Lynn (617)358-5575

4TH ANNUAL ST. PATRICK'S PARTY: 7 P.M., Saturday, March 17, 1984

Same as always, a lovely evening with wonderful people. Traditionally this has been our 'laid back' party, relaxed but very nice.

FEES: \$10.00 (plus the appropriate attendance fee)

MAKE-UP CLASS: 7 P.M., Wednesday, March 28, 1984

Lecturers: Joan and Elinor of 'Total Image'

How to apply make-up, what make-up and 'look' is best for you.

FEES: \$10.00 (plus appropriate attendance fee)

TRANSSEXUAL SUPPORT GROUP: 8 P.M., Saturday, April 7, 1984

Topic: Undecided at this time

FEES: (Appropriate attendance fee)

ANNUAL CLEAN-UP: All day Saturday and Sunday, April 14/15, 1984

Every member of the Tiffany Club is asked to pitch in to help square away Tiffany's facilities and grounds.

Needless to say there is a lot of work to do (more than enough to share with all), so you can expect to feel a little unfeminine for a while. However, it is a great opportunity for you to do a good deed for Tiffany, to get to know your sisters on a casual level, and have a good time doing it.

Refreshments will be available.

****CONTINUED****

TIFFANY'S 6TH ANNUAL SPRING OPEN HOUSE: All day, Saturday, April 21, 1984

Traditionally this is our largest party of the year, featuring indoor and outdoor functions all day and night chicken bar-b-que, etc.

FEES: \$10.00 (Attendance fees are waived for this event)

COMPORTEMNT CLASS: 7 P.M., Wednesday, April 25, 1984

Lecturers: Joan and Elinor of 'Total Image'

How to walk, sit, and generally act like a lady.

FEES: \$10.00 (plus the appropriate attendance fee)

4TH ANNUAL PROVINCETOWN OUTING: May 30/31, June 1/2/3/4, 1984

Once again we will be using the Crown & Anchor, and the Chicago House (with the option of a number of other guest houses in case we get more people than we expect).

In order to accommodate more people, we have made a few changes.

First, we always have 20 or so people who want to come early. Also, it was suggested at the business meeting last Fall that we have a business conference at our Outing. To accommodate those who want to come early, and those who want a business conference, we will be offering a five-night six-day package.

Next, we will be offering our regular three-night four-day package. However, since we must commit ourselves to the Crown & Anchor, only those who will be signing up for the full Weekend will be accommodated at the Crown. (This does not affect those who are planning to stay the full time, but wish not to stay at the Crown.) (****Keep in mind that traditionally the most enjoyable and memorable day has been Sunday. In order to enjoy Sunday we have to rent the hotel for Sunday. That means even if you are planning to leave late Sunday, you should sign up for the full four days.)

Next, to accommodate those who must leave early Sunday, we are offering a two-night three-day package. (Please understand that to offer this package we must use the more expensive guest houses, and that is reflected in the price.)

FEES:

Five-nights Six-days (May 30 - June 4): Single Occupancy \$260.00, Couples \$270.00, Double Occupancy \$210.00, Suite \$345.00

Three-nights Four-days (June 1 - June 4): Single Occupancy \$160.00, Couples \$170.00, Double Occupancy \$120.00, Suite \$225.00

Two-nights Three-days (June 1-3, or June 2-4): Single Occupancy \$140.00, Couples \$150.00, Double Occupancy \$110.00, (no suites available)

DISCOUNTS: We offer a 5% discount to members in good standing of approved non-profit TV/TS organizations. In addition, we offer a 10% discount if paid in full by 3/31/84.

DEPOSITS: A minimum of \$50.00 deposit is required.

REFUNDS: Total refunds can be given prior to April 15, and 50% refunds prior to May 15. No refunds can be given after May 15.

PAYMENTS: All checks and money orders must be payable in U.S. Funds. Make all checks and money orders payable to: Tiffany Club. Upon receipt of your registration, you will be sent a letter of confirmation, and any other instructions you may need.

****CONTINUED****

*****TAPESTRY: Issue 41 will be available the first week of February, and is also available at: 'Out Of Town News' (Cambridge), 'Glad Day Book Shop' (Boston), 'Tower News' (Lowell), 'Union News' (Worcester). The Tapestry is also available in Hartford, New York, Philadelphia, and Toronto.

*****NEW POLICY FOR TAPESTRY SUBSCRIPTIONS: In the past we offered a \$10.00 discount to members in good standing of non-profit organizations. We are now not offering any discount to individuals, but sending a \$10.00 rebate to the organization of the subscriber's choice.

The intention of this policy change is to encourage organizations to support the Tapestry, and to provide a supplemental income to those organizations who need it.

*****ATTN: TRANSSEXUALS, AND PERSONS INTRESTED IN TRANSSEXUALISM: Due to our growing Transsexual program, we are now compiling a separate mailing list of those persons who would like to be kept informed of upcoming programs and notices.

If you are interested in being kept informed, contact: Charlene Wanda M., c/o Box 19, Wayland, MA 01778

*****NEW TIFFANY CLUB BOARD OF DIRECTORS FOR 1984: Patricia Anne Ashley, Joanne B., Virginia Hunt, Linda Johnston (Chairman), Merissa Sherrill Lynn, Kimberly Schreiber, and Patricia Wells. First alternate Delores Carter, second alternate Karen Varney, and third alternate Judy S.
