

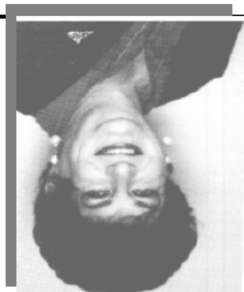
# Spy Nature Spittoon

**April 1, 1997**

**Our**

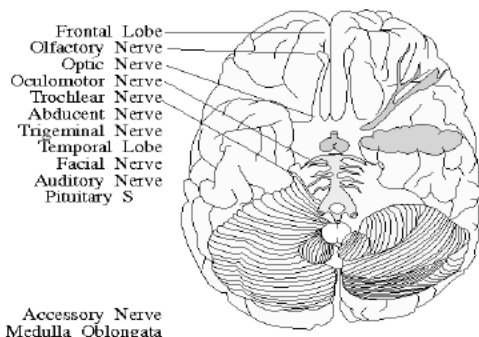
**motto: If it ain't fit to eat, we will print it..**

## Presidents Podium



## My Brain

Plop-plop-fizz-fizz



## Programs....

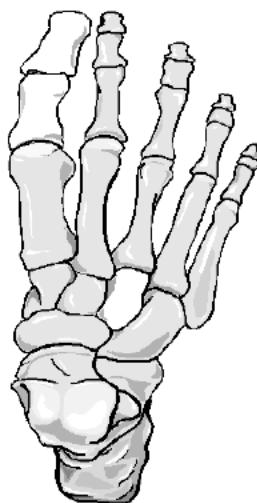
### TAPED REPLAY OF PREVIOUS PROGRAM

There are no programs left...they have all been used before. So instead of live programs we will play audio tapes of previous ones. The one I like best is the one on makeup application and coloring.

The following month will be the audio version of last years fabulous fashion show.

## MAY MEETING

The study of the High Heel and the Foot



Give Me \$20 and you can get the Chi Tribune again....

delivered by an armed employee of the US Postoffice

Anona mouse

## Treasurers Report

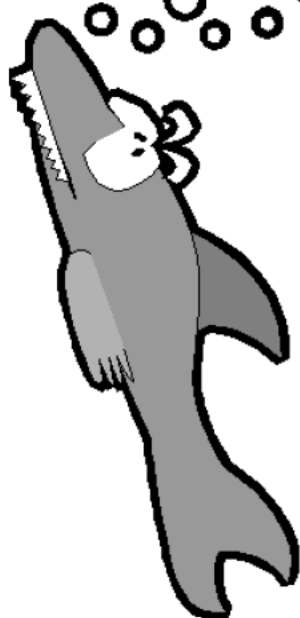
Balance Forward	\$2500.00	
Meeting Fees	\$450.00	
Dues	\$220.00	
Total Income	\$670.00	
Food		\$75.00
My trip to Hawaii		\$2980.00
Total Expenses		\$3055.00
Balance		\$ 115.00

**OOP's !!**

## Index

Gab Page 1  
More Gab Page 2  
Ah forget it....

"I love fast food . The last swimmer I got was doing 20 miles an hour."



# Chi Chapter Tribune

Vol# XXXVI April 1997  
Issue #4

## April Fool

### Presidents Podium

#### **Congratulations**

We would all like to welcome Christine K. as our new Secretary and member of the Board of Chi-Chapter.

I am sure she will be gracing the pages of the Tribune next month with her reports on the various goings on.

Last year I asked her to handle letters to the members with lapsed dues, and she has been very active with the newcomers group. I am sure she will do a wonderful job.

Also, welcome back to Candace, Miranda, and Bridget and that other person, on their reelection by affirmation.

#### **WHEW!!!!!!!**

Following a revote by the Board of Directors on the matter of membership ratification of the Bylaws, the Bylaws were presented to the membership at the March meeting and a secret ballot was taken. The vote was 43-5 for acceptance. I hope this puts to rest some of the tension which has been present over the last few months.

#### **Why are you here?**

*(Continued on page 4)*

### *Miranda Writes....*

#### **....Professor Alan Lanning to Present April Program**

I am sure that each one of you has wondered at one time or another how we came to be so blessed with the best of two genders. Is it a genetic predisposition, a physiological quirk, or are we simply the product of our upbringing? You probably also know that there is no agreement among the experts about the root cause of our gender euphoria, because likely there is no single answer.

Dr. Alan Lanning, from the Psychology Department at the College of DuPage, has studied and published on prenatal sexual development. The environment that we are in before birth has a dramatic effect on gender identity and expression. Dr. Lanning will discuss studies on prenatal hormonal environment and later transgender behavior.

Dr. Lanning is no stranger to Chi Chapter. For years Naomi and Eve have done outreach to his Human Sexuality class at DuPage. Last year at the Holiday En Femme, Dr. Lanning brought his entire class to the conference for some first hand experience. This will be a great opportunity to get some feedback from him on the effectiveness of our

*(Continued on page 4)*

### Couples Group

The next Couples meeting will be on **Saturday, April 26th** and the location will be announced at the meeting or available on the hotline. Please phone the hotline for information and please let us know you are coming so we can have enough chairs. We need to know who is coming in case of last minute changes, etc.

Remember, this is a **NON-CROSSDRESSED** meeting.

### P.A.L.S.

The P.A.L.S. meeting was held at 6:30pm on March 22nd just prior to the regular meeting. Present were; Dawn, Carolyn, Joyce, Kim, Donna, Laurie Ann, Kathleen and Debbie.

A total of \$25 was raised at the PALS meeting for SPICE. Faye Bass held a raffle and donated \$26 towards SPICE. Dawn has announced that beginning in April a 50/50 share the pot raffle will be held to raise funds for the SPICE trip.

# The Meaning Of Support

by *Miranda Stevens*

Something happened at the last meeting that made me quite sad. I had met a newcomer before the meeting started, a lovely person with beautiful smooth cheeks, and a warm winning smile. I had little time to talk with her, but I knew that I wanted to get to know her better. I looked forward to resuming our conversation after the meeting. Well, that conversation never happened. She was so disenchanted with our meeting that she just got up and left during the "discussion" of the new by-laws.

I've been thinking a lot about that incident since then. What is our group all about? What is the meaning of support? Why do so many newcomers never return for a second meeting?

You all know how much courage it takes to come out to your first meeting. Many of us knew about Tri-Ess for months or even years before coming out. What if all those years of anxious anticipation and nerving yourself up are suddenly dashed to bits by the realization that you are nothing at all like the people you are encountering at the meeting? What if you come out seeking and needing support and reaffirmation for your feelings of femininity, and all you encounter is hostility and "guys in dresses"? Would you be willing to come back to another meeting? I doubt it! You might be driven back to the closet for another 10 years!

A few months ago, I had the opportunity to visit the Gemini Gender Group in Milwaukee. They have a wonderfully refreshing, totally supportive style. I left there wondering whether it would be possible to incorporate some of their learnings into our own group. They have no officers per se. Individuals facilitate the meetings on a rotating basis, without official titles. The meeting started off with a poem, a celebration of life and love and spirit. The group was large, but there was time for introductions. "Hi, I'm so-and-so. I've been having a hard time since the last meeting. You

know I've been recovering from an illness, but I'm feeling much better now." Or, "It is so good to be back here. I've told my family about myself and they've been so supportive of me." Or, "My daughter was the star in her school play and she was wonderful." Then someone stood up and told her story. You could just feel the warmth and compassion fill that room. The entire meeting was like that.

Back in January, Dr. Michael Bailey presented the program as our invited guest. Later that week, one of us, I think it was DeeDee, asked him what he thought of our meeting. He replied that it was like the Elks Club in dresses (or something like that). I was terribly offended that he perceived us as any other typical men's club, with only the uniform changed. But now I see that he was essentially correct. There was very little femininity at the last meeting. It would be very easy for a newcomer to see us as "guys in dresses."


Now granted, last month's meeting was not typical. We have had some wonderful, supportive meetings in the past. But as I thought back to the Gemini meeting on that cold January night, the contrast was dramatic.

Let's try to remember that support is what this is all about, and step back and look at ourselves through the eyes of a newcomer who is just in the process of discovery. What impression do you want to make?

INDEX	
Forget it	Page 1
Presidents Podium	Page 2
Miranda Writes	Page 2
Meaning of Support	Page 3
Index	You're here
Meeting Attendance	Page 4
"Apologize"	Page 5
Open Letter	Page 6
Open Letter	Page 7
Events	Page 8

## MARCH MEETING Attendance

Present at the meeting were; Alicia, Miranda, Lois, Laurette, Alicia, Naomi & Rachel, Eve, Laura, Gloria, Kiki, Carole, Sheila D, Barbara Diane & Barb, Lenore, Marcia, Jamie, Athena, Lori, Candace & Dawn, Amanda, Christine K., Edie, Denise & Kim, Lee, Sandy, Carol, Janet, Sunny, Norma & Joyce, Donna, Karen, Jamie, Colleen & Verna, Vickie, Vanessa, Loraine, Sherri, Kelly, Debbie, Renee & Deb, Vicki, Beth, Kimberly, Andrea, Laurie Ann & Debbie, Amanda, Renee, Wallie, Carolyn, Mylissa B., Christina & Carolyn, Jill & Kathleen, Sabrina, Hillary, Crystal, Barbara, Faye



**PO Box 40**  
**Wood Dale, IL 60191-0040**

**Officers**  
**President: Denise Peters**  
**VP/Program: Miranda Stevens**  
**VP/Membership: Candace Mahne**  
**Secretary: Christine K.**  
**Asst Secretary: Samantha**  
**Treasurer: Bridget**

**Committee Chairs**  
**BeAll: Miranda/Bridget**  
**Newcomers: Amanda/Dee Dee**  
**Member retention: Christine K.**  
**P.A.L.S./ Couples: Dawn**  
**Hospitality: Norma & Joyce**

TRI-ESS is a not-for-profit social and educational support group for crossdressers and their spouses and partners. Meetings are held on the third Saturday of each month.

**Chi Chapter Telephone Hotline:**  
**(630) 262-8707**



(Continued from page 2) *Miranda*  
outreach program.

## Sidetracks III: Last Call

For the past few years, the Chicago Gay Men's Chorus has been thrilling us with their annual Spring concert, *Sidetracks*. This year is the last time they will perform this concert. If you miss it this year, you won't have another chance.

This year we are doing *Sidetracks III: Last Call* as a joint event with CGS. The show is Saturday, April 26, at 8:00 PM. We've reserved a block of 20 tickets, but you have to RSVP with Rori or me as soon as possible. Tickets are only \$18 and, believe me, they sell out quickly.

The CGMC completes its award-winning "track trilogy" with more show tune she-nanigans. The Chorus performs Broadway and Hollywood musical hits as videos duplicate their actions on overhead screens. They sing and dance both the men's and women's parts in fabulous costumes that exactly duplicate the originals on screen.

The show is at the Athenaeum Theater, 2936 N. Southport, near the intersection of Wellington, Southport, and Lincoln. We plan to meet at Transformations (146 N. Oak Park Ave.) at 5:30-6:00 PM, and carpool to the theater. We will probably get a bite to eat before the show at one of the many restaurants in the area. Call me (847-██████████) or Rori (708-██████████) to reserve your ticket today!

## Future Events

Come on, girls. You know you want it. So go ahead, do it. Try out that outrageous act you've always wanted to do at the one, the only, the fabulous Chi Cabaret on May 17!

We've booked the downstairs meeting room, complete with a private entrance around back by the pool. Just as we did with the Chi Coffeehouse in the Fall, we will transform the room into an intimate cabaret setting with cozy round tables and candlelit atmosphere!

So go ahead, be daring, have some fun, strut your stuff. This is your chance to live the fantasy. Start planning your act now! The timing is such that you can use the Cabaret as a rehearsal for the Be All Gong Show. Contact Amanda Lynn Richards at PO Box 426, Western Springs, IL 60558, or by e-mail at ██████████@mcs.net.

## Be All Convention Needs You!

Don't forget to plan for the Be All You Want To Be Weekend, June 4-8. We still need people to help at events, registration, and workshops. Call me at (847) ██████████, and we can discuss how you can help.

*Miranda*



(Continued from page 2) *Presidents Podium*

As Miranda mentions in her column we need less tension at the meeting and I might add more time for support for our spouses, less time on business. Speaking of spouses, I wish more members would bring their spouses to the meetings, sometimes the only time we see them are at the Christmas party. My wife recently attended her first business meeting and she had a blast. She was more worried thinking about it than actually being there. This is one of the reasons Chi Chapter exists. We are a focused group, focused so that we may give our best to those who need it. I am proud to be a member of this group and equally proud of the work that has been accomplished. A couple of comments to those who would suggest that we change our membership requirements, renounce our Tri-Ess affiliation and become a diverse (open) diverse group, I say 'why?'. The Chicago area has many diverse groups catering to all, CGS, T.O.N.I. to mention a few. Is there really a need for another diverse group? Or is this just a Politically Correct thing to do?. Cross dressers don't come out of the wood work because it's PC, spouses don't understand their husbands crossdressing more-so because it's PC. If everything was Politically Correct, there would be no mention of crossdressing or Transgenderism in the media. PC is not perfect, it itself is biased to a particular view point. If that is all you are interested in, being Politically Correct and jumping on some bandwagon, then don't look here, join a diverse group.

## C.O.G.G.

I had announced that I would be out of town as of the 1st of April however, these plans were changed and I was able to attend the quarterly meeting of the Council of Gender Groups, (Gender Leadership Coalition). Amongst the topics were coordination of schedules between the various groups and the upcoming leadership training seminar in May.

## S.P.I.C.E.

Don't forget to register for S.P.I.C.E. on July 16-20 in Ontario Calif. It is configured for the genetic female in a committed relationship with a heterosexual crossdresser and their crossdresser spouse. There are separate, parallel program tracks with a daily time of closure in which the couples come together. A separate woman only track is available for women who attend without their partners.

Contact Diana at 1-888-██████████ or fax Peggy Rudd at 281-██████████ for more information.

**Denise**

*Mary Kay*

**Makeovers - Facials  
Independent Professional Beauty  
Consultant**

**FAY BASS**

**(630) 972-1976**

# I Apologize For My Generation

by Athena

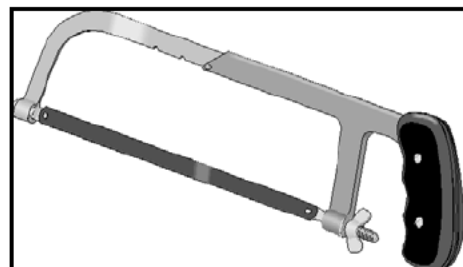
Yes, I apologize.....For what you ask?? Well, let me begin...

I apologize for our insufferable egos. Yes, we boomers seem to know it all. We run about saying how great our generation is, how much more we know than our ignorant forbears and how much more moral we are than both past and present generations. Yet, when we wrest the reins of leadership from past generations what do we do, we lose control and let the horses run wildly this way and that. Yes, we were the ones who bitched, moaned, and complained about how previous generations had lead us to ruin and how WE would be different.. sure, we would change things for the better because WE knew it all. Whether from the right (Newt) or from the left (Billy Clinton) we KNEW!

And so what happened? Throughout society the boomers have finally gotten what they have desired since the 60s. They've TAKEN OVER! And have promptly started running everything into the ground. But do these boomers think they are to blame? Heck no! I'm reminded of Mr. Newt Gingrich's reaction when he was found to created a non-profit charity and used it for campaign purposes (it was my lawyer) and the various reactions of Mr. Clinton, Mr. Gore and friends to the unearthing of evidence that they have invited all sorts of thieves, cutthroats and spies into the White House for a cup of java and a donut (it was congress, the FBI, the Democratic National Committee, the stairs, the system, etc.). And of course, poll after poll indicates that my fellow boomers can't get it in their skulls that they should be angry at this corruption (yeah, it's 'The System'..... zzzzzzzzzzzzz). The leaders of my generation thrive on openness... unfortunately there are two sides to this openness. There is the good side, the free expresion of new ideas in an open society and then there is, increasingly common, the bad side. The bad side involves people screaming at each other with little real regard to other points of view. In this type of environment there is little room

for compromise.

Finally, I apologise that our gender community has graduated from being in the closet, not to respectability, but to being a freak show. A show illustrated in lurid detail on all the latest trashy TV talk shows often with 'representatives' of our community I wouldn't want to be in the same city with, much less the same room. It is the boomers who, by in large, create and host these icons to our deteriorating culture.



One of the many tools used by Miranda to construct the programs.



**\$3.00 OFF Per  
Yard  
With This Ad**

**\*CARPET \*CERAMIC \*MARBLE  
\*GRANITE \*HARDWOOD**

**90 Days Same As Cash  
No Interest**

**No Money Down  
Financing Available**

**3512 N. Milwaukee Av. Northbrook, IL 60062  
(847)297-4100**

RORI

## Open Letter to: Mirada Stevens % Chi-Chapter

Dear Miranda:

I have been a member of Tri-Ess and its predecessor FPE ever since it began, in 1962, and of CHI Chapter and its predecessor since 1962. Even though I have not been able to attend the regular meetings since that year due to my distance from Chicago, I have attended two of the bigger meetings there, the Be-Alls, and of course have attended FPE meetings in different cities. I'm in CHI DELTA MU also.

I did not, when a youngster, make a conscious decision to become a heterosexual person instead of a homosexual person. That decision was made for me before birth, by a natural programming of my brain. I had no choice in the matter. It could have been the opposite, or some gradient in between, as some inexactly known percentage of humans are programmed. Likewise, those people have no choice in the matter either. I, therefore, have no moral right to despise any person for that person's sexual orientation. Prenatal brain programming is evidently irreversible. Nature is always experimenting.

I have attended many crossdressing meetings of the "open" classification. I have no prejudice toward the Gay community, even though, on two separate occasions I was "propositioned" by persons who assumed I too was Gay. I politely turned them down and we parted friendly. I have, on a few rare occasions, experienced scorn by Gay people or transsexuals, because I was a "mere" cross-dresser. I brushed those incidents off, for I knew that the people involved were misinformed or just plain intolerant. They considered me inferior.

I have been married twice, to wonderful women who cooperated with my crossdressing, a total of 55-1/2 years and three children, but have been widowed in each case. I have been a widower, now living alone for the last six years, a nonagenarian, probably the oldest member of CHI Chapter. Even though unable to attend meetings for the years since 1962 I have kept up my membership to support the work of the chapter just as I have done with FPE and its successor, Tri-Ess.

I am a member of several organizations which serve members of specific interests. one is a male aviators' organization.

(There is another organization for female pilots). We do not consider this to be discriminatory. Do you? one of the organizations is for owners and pilots of aircraft. Do you think that we should be forced to admit members who are in opposition to flying, aircraft, and all such activities and who advocate restrictive laws and regulations pertaining to aviation? There are many such people so we must protect our own interests or perish. Almost every organization to which I belong has some restrictions in membership qualifications. one is a professional engineering organization. Are women not to be allowed to have a women's club without being forced to admit men to their private meetings? I think that this antidiscrimination fad has been exaggerated enough - too

much!

When I took my wives to crossdresser meetings of the "open" classification they were of course upset by the Gay members, but were at ease at heterosexual meetings. I can easily understand that. If it had not been for the avail of FPE and Tri-Ess I would certainly never again have taken a wife of mine to a crossdresser meeting. our marriages were peaceful.

Tri-Ess based groups, such as CHI, are for the support of heterosexual crossdressers, specifically, but that does not mean that we are intolerant or opposed to the "open" or even outright Gay organizations. We are glad to cooperate with them for our mutual interests. We do not consider ourselves a higher social order. We simply need our own specific group of heterosexual crossdressers for our own specific needs. This is not discrimination. I belong to the NRA. Should the NRA be required to admit opponents to the Second Amendment or outright proponents of disarming law abiding citizens, or anti-hunting advocates, to membership to bore from within ?

I belong to CHI these many years BECAUSE it is heterosexual. I also belong to "open" IFGE and support its aims, which I am sure do not advocate extermination of Tri-Ess or of CHI, both of which are for the support of crossdressers. IFGE is a fine organization, of which I am proud to be a member. It is for the interests of ALL crossdressers and all of the transgender community. I am sure that they do not knowingly or willingly admit bigots who condemn transgender people as decadent and degenerate.

Miranda, please reconsider ! Neither CHI nor Tri-Ess has any discriminatory intent in their agendas. we simply wish to have our own private group. We support crossdressers' goals. There is no shortage of "open groups." There is only one Tri-Ess. Let it and its chapters remain as is. We have unique needs. Those who wish may join open groups instead, or in addition to CHI. There are many good people in open groups.

Very sincerely,

Felicity NY-1318-M



### The Other You

(Get A New Attitude)

#### Makeovers & Consultations

By Appointment (Private Room)

Ask for Mary

#### WIGS \* HAIRPIECES \* JEWELRY

3409 W. Belmont  
Chicago, IL  
773-478-4177  
(Kennedy at Kimball)

Tues thru Friday 10:30-7PM  
Saturday 10:30 to 5PM  
Other Hours By  
Appointment



## To The General Membership and The Board of Chi-Chapter

As a subject for general comment and discussion prior to a floor motion on the same subject at our next regular meeting, I propose that the Chi Chapter begin an active search for a new meeting place for the following reasons;

A. Our present quarters are too small physically - We simply have grown. The meetings are now crowded to the point where one has to navigate circuitously through a crush of people to get from one side of the room to the other. We are often short of chairs and tables and have to ask the management for more, but then we have difficulty finding room to fit them in when they are produced.

B. Inadequate ventilation - The air handling units apparently are heat exchangers only and not air exchangers, one of which hasn't worked for months. We have too many people breathing the same air over and over again. It is neither healthy nor does it meet current building codes for that very reason. Being sensitive to low-O<sub>2</sub>/hi-CO<sub>2</sub> air, I spent the majority of my time at the last meeting trying to keep the bathroom vent fans on and the outer doors cracked open for fresh air inflow. I still had to breath deeply and rapidly all night, with many trips into the hallway and outside for relief.

C. Poor local social facilities - Except for special events, we always have to go elsewhere before and after meetings for food and drinks. This motel is just too small and out of the way to justify a restaurant and bar with regular service, For many of us, Tri-Ess is also a social event. But we have to go somewhere else, where we are then subjected to too much Saturday night music noise to socialize.

For the short term I suggest that;

1. The motel management be given a minimum requirement for the numbers of chairs and tables to be set up, and that these be checked prior to each meeting.

2. The motel management be asked to make repairs to the

malfunctioning heat exchanger.

3. At future meetings a general announcement be made to ensure that all bathroom and heat exchanger fans remain on, whether in the heating, cooling or fan only modes, and that all windows and doors that can be opened, remain cracked open far enough to ensure continuous fresh air inflow without excessive drafts.

For the long term I suggest that;

4. The minimum requirements be determined for a new Chi Chapter/Tri-Ess meeting place, in all respects, with provisions for future growth.

5. A monthly progress report be made to the membership on the status of the search for a new meeting site.

Sincerely,

Kelly A. Saint Cyr IL-4297-S



**You Can Spend June  
Picking These or Attend  
The Be-All**

Denise's Comments:

As for space, I am sure most of the members will remember the Midway where we had a room designed for 50 people and a attendance of +70. In addition the AC was non-existent and required open windows even with an outdoor temperature of 10 degrees. Because eof the, a search for a new meeting location was implemented and headed by Rori and Gloria. With months of looking and searching for a suitable location, Rori finalized on the present location and it was approved by the board and we moved effective May 1995. Sure the price was steep +\$400 a month compared to the Midway, but it did have AC, would accommodate more people, was available on Saturdays and had a separate entrance. The hotel is notified of the table arraignment prior to the meeting and this sometimes gets changed depending on Miranda's requirements for the program. At present we would need to eliminate vendors tables and food tables to accommodate more people, I am not sure everyone would want that. As I mentioned, my survey of these very questions of the membership was incomplete and therefore useless and we don't have a feeling of what the membership at large would want. .

A quick checklist in order of importance follows:

Co\$t  
Central Location  
Room Size  
Room Heating/AC  
Private secure entrance  
Local Social Facilities

The local social facilities would be a last consideration if at all. Heck, the Midway had a bar and a restaurant, but they would not allow us in there, so much for that, what do you do then?

As any one who was involved in the last relocation can tell you, you can't be too choosy.

I would be more than happy to appoint a search committee to try once more, any one interested?

As for the environmental conditions, I have notified the management of the defective air units (second time).

# GREAT LAKES GENDER LEADERSHIP COUNCIL ACTIVITIES

## CALENDAR

### APRIL 1997



#### Week of April 6-12

Tues 4/8 8:00 p.m. CGS Meeting, Stardust, 5688 N. Milwaukee (708-863-7714)  
Sat 4/12 6:30 p.m. Gemini Gender Group Meeting (call 414-297-9328). Program: Spring Social  
TONI social (call 219-650-2142)

#### Week of April 13-19

Thurs 4/17, C.A.T.S, 4751 W. Touhy, Suite 203, Lincolnwood (708-266-8626)  
Sat 4/19, 7:00 p.m. FORGE (FTM), Ann Sathers+s. Discrimination, harrassment and legal rights/ protection. Contact  
C. Michael Munson (414-278-6031)  
8:00 p.m. Chi Chapter Tri-S, Holiday Inn Exp, Elmhurst (630-262-8707)  
Program: Dr. Alan Lanning: Prenatal hormonal environment and gender.

#### Week of April 20-26

Tues 4/22, 8:30 p.m. CGS Social, Temptations, 10235 W Grand, Franklin Park  
Thurs 4/24, 7:00 p.m. TONI meeting, South Bend Location (219-650-2142)  
Sat 4/26, 8:00 p.m. Joint Chi Chapter and CGS outing to Chicago Gay Men+s Chorus production of Sidetracks III.  
Athenaeum Theater. Tickets are \$18. Call Miranda (847- ) or Rori (708- ) for tickets.

#### Week of April 27-May 3

Thurs 5/1, 7:30 p.m. It's Time, Illinois 146 N. Oak Park Ave. (call 708-535-1506)

#### Week of May 4-10

Sat 5/10 6:30p.m. GGG Meeting

**Plan now to attend the Be All Weekend, June 4-8, 1997**  
**Hosted by Chi Chapter at the Hyatt Lisle.**  
**Write to Chi Chapter at P.O. Box 40, Wood Dale IL 60191-0040**  
**or call (630) 262-8707**

## CROSSDRESSING

### COMPLICATING YOUR RELATIONSHIP?

## Come To "S.P.I.C.E." 1997!

July 16-20 - ONTARIO, CALIFORNIA

**RENEW YOURSELF**  
**RENEW YOUR RELATIONSHIP**

Write: Dr. Peggy Rudd  
PO Box 5304, Katy TX 77491  
Fax Peggy: 281-  
Phone Diana: 888-